

5.0/6.0/8.0/10/12/15kW
6.4/12.8/19.2/25.7kWh

Residential All-in-One

Safe & Reliable

Up to 3 MPPTs, and built-in arc-fault circuit interrupter & string current detection

IP65 for outdoor installation and built-in multiple protection measures

Strong adaptability and long life

Large-capacity battery with automotive-grade, long-life battery cells designed for a lifespan of up to 10 years.

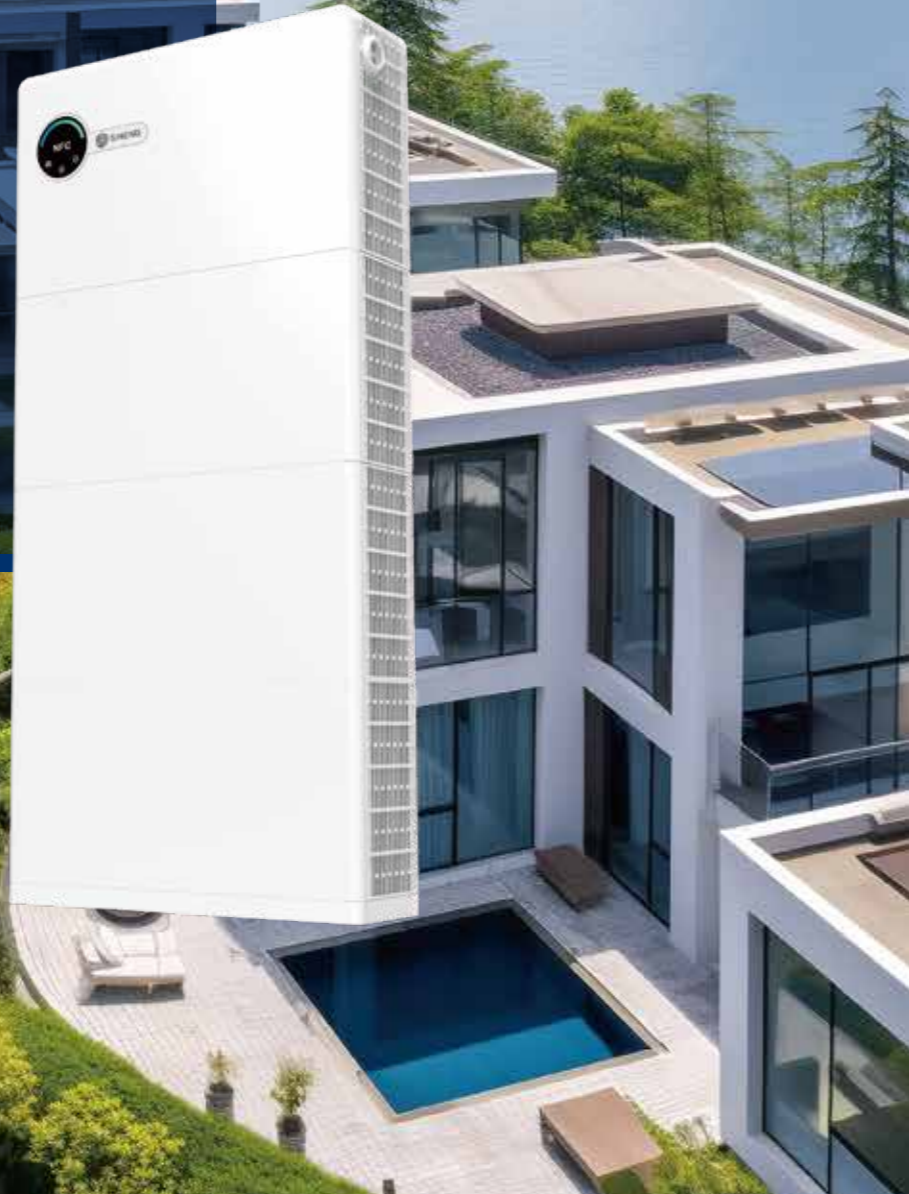
Up to 18A maximum PV input current, compatible with mainstream PV modules.

User-Friendly Design

Modular stacking design and quick plugging design facilitate easy installation, significantly reducing installation time.

DC/DC module integrated each battery pack, eliminate the barrel effect and facilitate the mixing of old and new batteries.

Power plant set up and debug through enjoysolar and multiple power consumption schemes tailored to various scenarios.



System Configuration [SN 5.0/6.0/8.0/10/12/15 HTC]+N*[EM-6.4KWH-HA]

Power Controller	SN5.0/6.0/8.0/10/12/15HTC			
Number of power controller	1			
Battery Modules	EM-6.4KWH-HA			
Number of battery modules	1	2	3	4
Battery storage capacity	6.53kWh	13.06kWh	19.56kWh	26.11kWh
Usable battery capacity	6.4kWh	12.8kWh	19.2kWh	26.4kWh
Rated charging/discharging power	3kW	6kW	9kW	12kW
Weight	100.25/102.3kg	170.25/172.3kg	240.25/242.3kg	310.25/312.3kg
Dimensions (W*H*D)	750*865*251.7mm	750*1235*251.7mm	750*1605*251.7mm	750*1975*251.7mm
Base dimensions (W*H*D)	750*50*251.7mm			
Display	LED & APP & NFC			
Communication	Wifi/4G/Ethernet, RS485			
Protection degree	IP65			

Power Controller	SN5.0HTC	SN6.0HTC	SN8.0HTC	SN10HTC	SN12HTC	SN15HTC
Recommended max. PV power (STC)	7.5kWp	9.0kWp	12kWp	15kWp	18kWp	22.5kWp
Startup voltage	180V					
MPPT operating voltage range	160-950V					
Number of PV inputs	2			3		
Max.PV input current	18A					
Max. short circuit current	25A					
Nominal grid voltage &frequency	220/380V, 230/400V 50/60Hz					
Nominal grid output power	5kW	6kW	8kW	10kW	12kW	15kW
Max. grid output power	5.5kVA	6.6kVA	8.8kVA	11kVA	13.2kVA	16.5kVA
Max. grid output current	8.4A	10A	13.4A	16.7A	20A	25A
Max. input power from grid	22.5kVA					
Power factor range	0.8 lagging-0.8 leading					
Nominal output power(Back-up)	5kW	6kW	8kW	10kW	12kW	15kW
Peak output power(Back-up)	7.5kVA, 60S	9kVA, 60S	12kVA, 60S	15kVA, 60S	18kVA, 60S	18kVA, 60S
Switch time to EPS mode	10ms					
Cooling Method	Natural			Smart fan cooling		
Operation temperature	-25 ~ 60°C					
Weight	30.25kg			32.3kg		
Dimensions (W*H*D)	780*443.5*218mm					
Protection	Anti islanding protection, Leakage current protection,PV reverse protection, Arc-fault circuit-interrupter, Surge protection(DC II/AC II)					

Model EM-6.4KWH-HA

Battery cell Type	LFP 3.2V/335Ah 1P6S
Output voltage Range	350~470V
Rated charging/discharging power	3kW
Operation temperature	-15 ~ 50°C
Installation method	Ground-mounted
Weight	70kg
Topology	Isolated